

Experiment group: workshop20191102 Sample ID: Food Flow cell ID: FAL28558 Flow cell product code: FLO-MIN106 Kit ID: SQK-PBK004
 Current output directory: C:\Users\SwissDeCode\lab\Documents\Paulina\workshop20191102

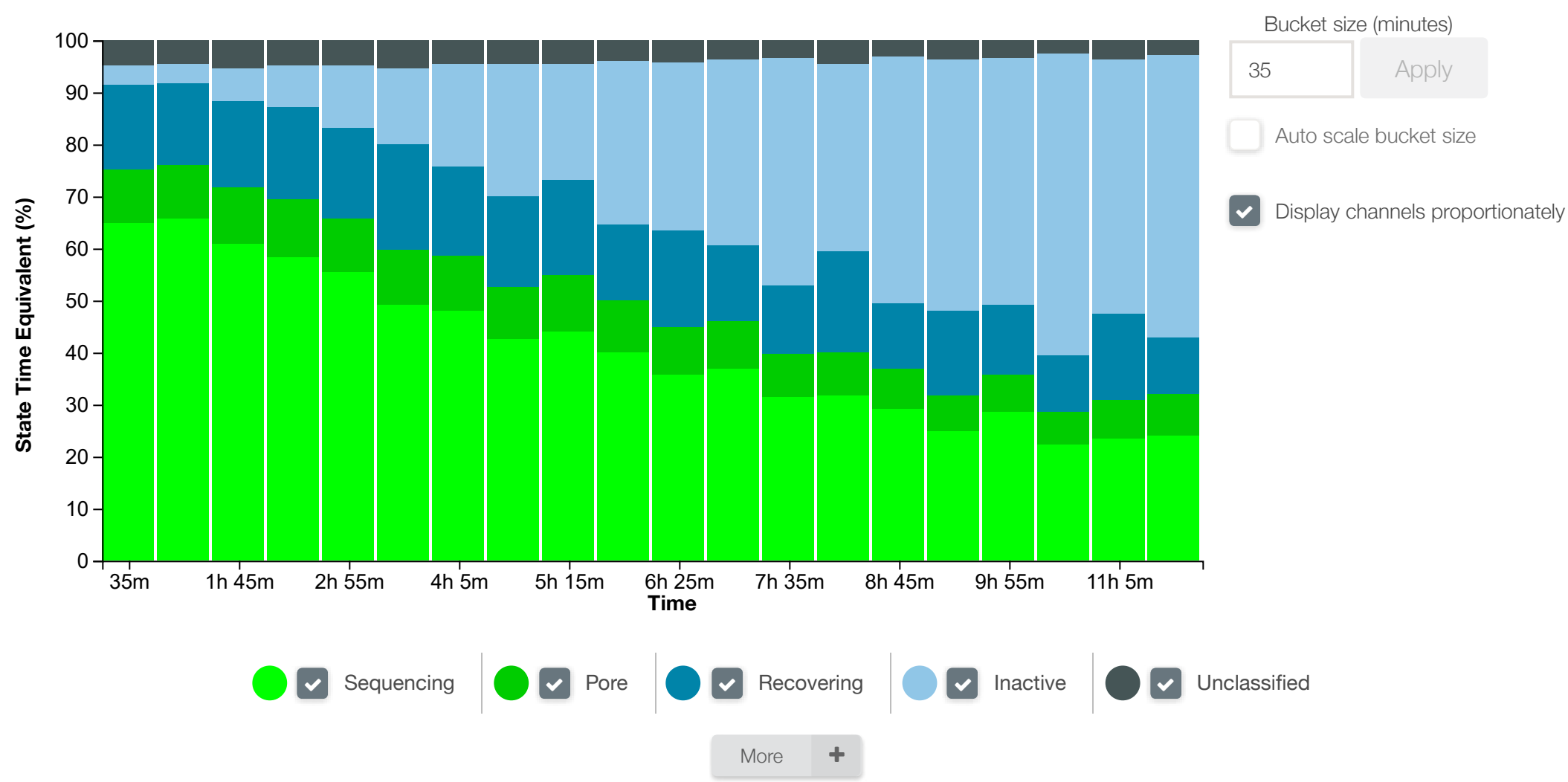
Messages [Filter](#)
 Device

Run finished

[Export PDF Report](#)

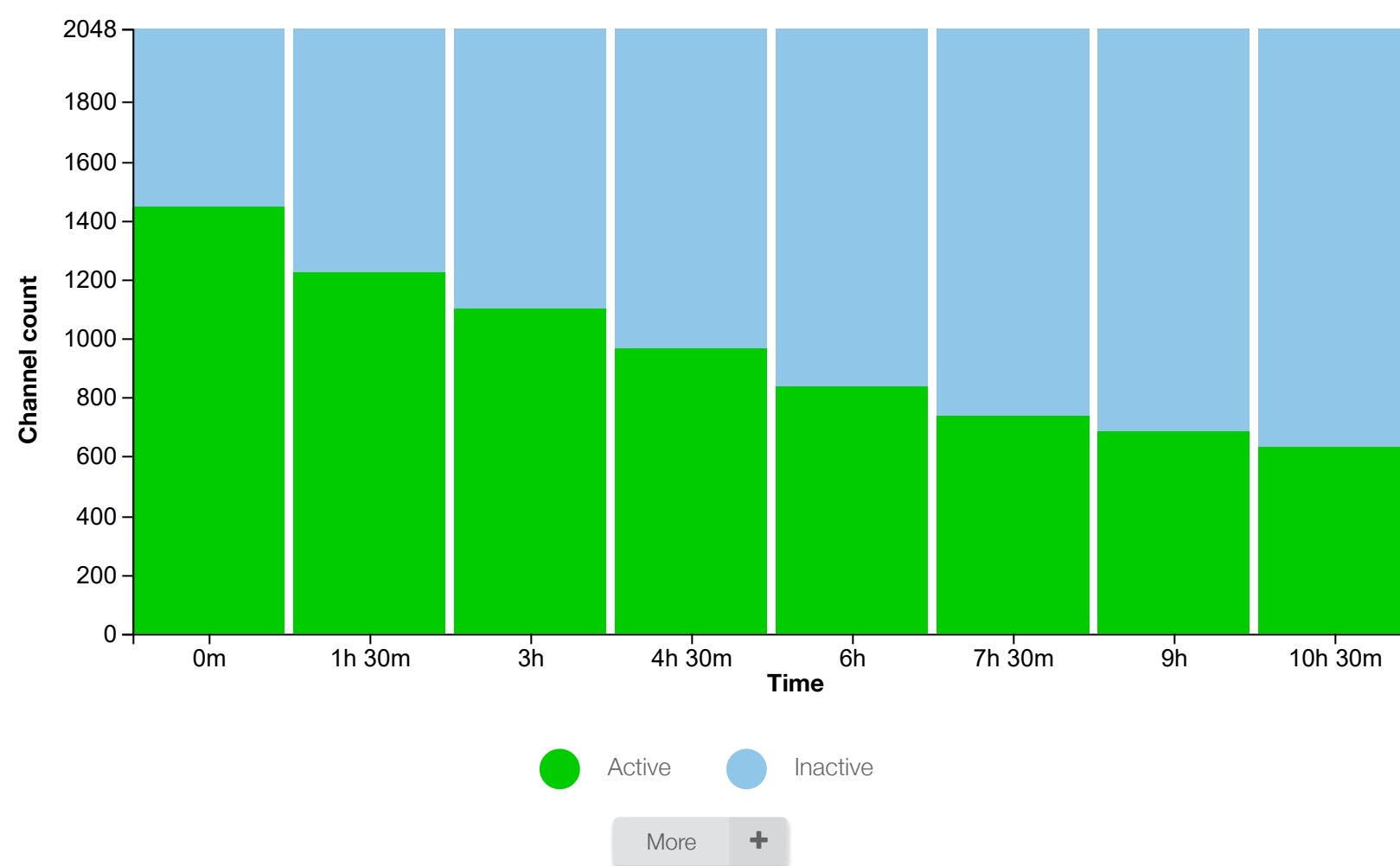
Duty Time

Summary of channel states over time



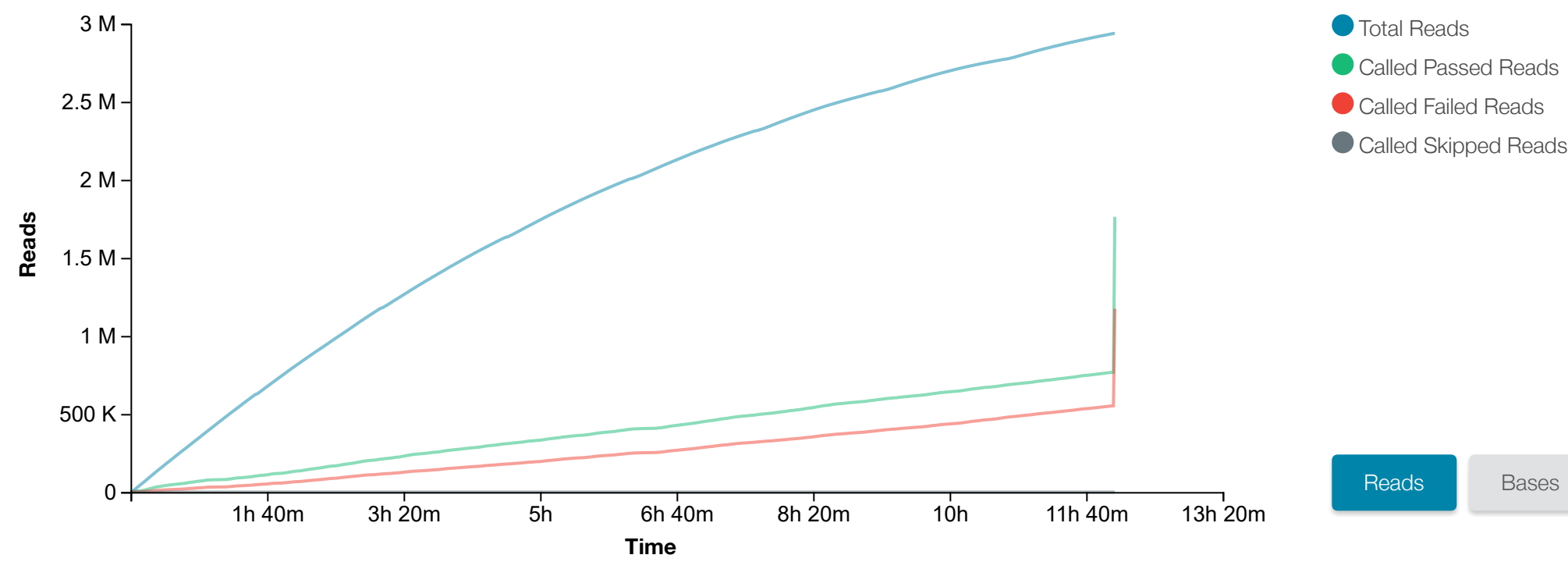
Mux Scan Results

Channel counts per category after each mux scan



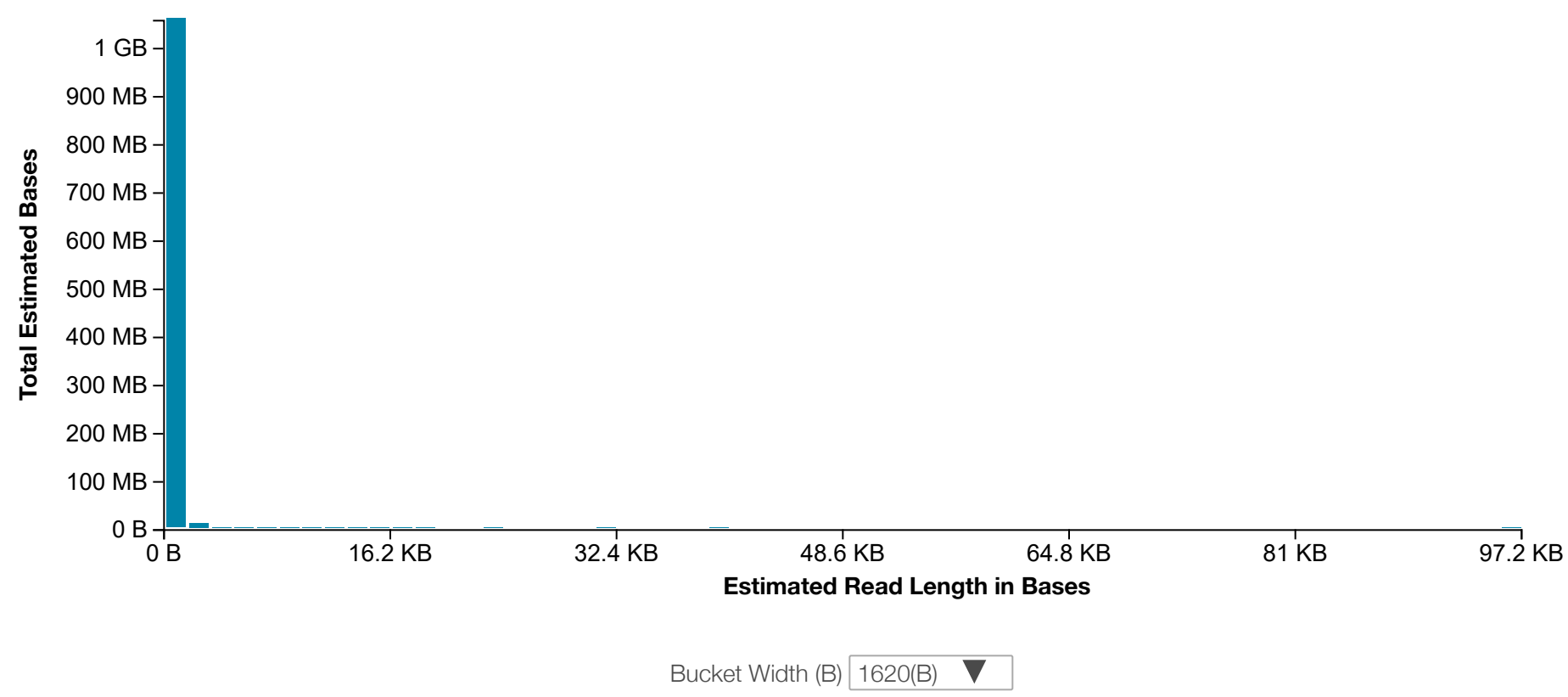
Cumulative Throughput

Throughput of run over time



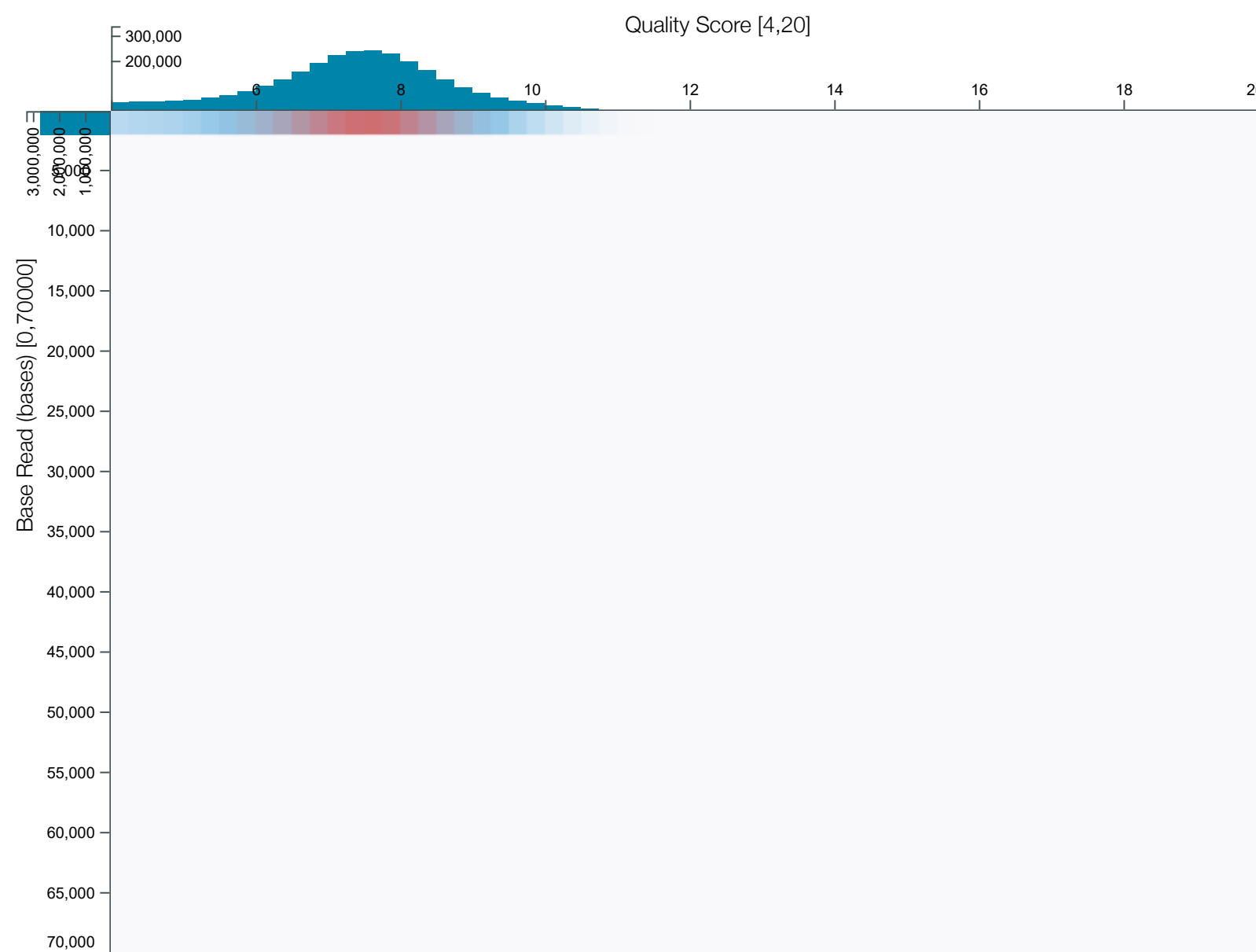
Read Length Histogram

Summary read length distribution



Basecall

Heatmap of read length vs basecall quality score



- Finished Sequencing** (MN23211) 1 day ago
- Finished Mux Scan** (MN23211) 1 day ago
- Group 4 has 14 active channels** (MN23211) 1 day ago
- Group 3 has 63 active channels** (MN23211) 1 day ago
- Group 2 has 181 active channels** (MN23211) 1 day ago
- Group 1 has 374 active channels** (MN23211) 1 day ago
- a total of 632 wells have been selected and split into the following groups** (MN23211) 1 day ago
- Processing Mux 4** (MN23211) 1 day ago
- advancing to group 4** (MN23211) 1 day ago
- Processing Mux 3** (MN23211) 1 day ago
- advancing to group 3** (MN23211) 1 day ago
- Processing Mux 2** (MN23211) 1 day ago
- advancing to group 2** (MN23211) 1 day ago
- Processing Mux 1** (MN23211) 1 day ago
- Starting Mux Scan** (MN23211) 1 day ago
- Finished Mux Scan** (MN23211) 1 day ago
- Group 4 has 12 active channels** (MN23211) 1 day ago
- Group 3 has 66 active channels** (MN23211) 1 day ago
- Group 2 has 219 active channels** (MN23211) 1 day ago
- Group 1 has 386 active channels** (MN23211) 1 day ago
- a total of 683 wells have been selected and split into the following groups** (MN23211) 1 day ago
- Processing Mux 4** (MN23211) 1 day ago
- advancing to group 4** (MN23211) 1 day ago
- Processing Mux 3** (MN23211) 1 day ago
- advancing to group 3** (MN23211) 1 day ago
- Processing Mux 2** (MN23211) 1 day ago
- advancing to group 2** (MN23211) 1 day ago
- Processing Mux 1** (MN23211) 1 day ago
- Starting Mux Scan** (MN23211) 1 day ago
- Finished Mux Scan** (MN23211) 1 day ago
- Group 4 has 20 active channels** (MN23211) 1 day ago
- Group 3 has 85 active channels** (MN23211) 1 day ago
- Group 2 has 230 active channels** (MN23211) 1 day ago
- Group 1 has 405 active channels** (MN23211) 1 day ago
- a total of 740 wells have been selected and split into the following groups** (MN23211) 1 day ago
- Processing Mux 4** (MN23211) 1 day ago
- advancing to group 4** (MN23211) 1 day ago
- Processing Mux 3** (MN23211) 1 day ago
- advancing to group 3** (MN23211) 1 day ago
- Processing Mux 2** (MN23211) 1 day ago
- advancing to group 2** (MN23211) 1 day ago
- Processing Mux 1** (MN23211) 1 day ago
- Starting Mux Scan** (MN23211) 1 day ago

Installed 18.12.6
Available 19.10.1.0
[New version](#) [UPDATE](#)